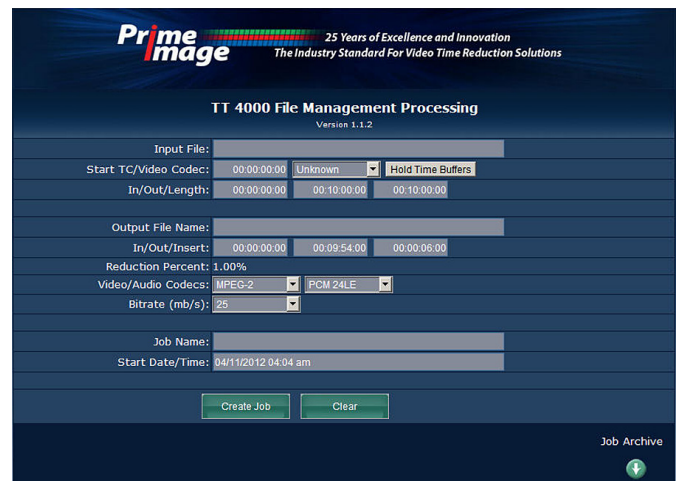


NEW RELEASE – The introduction of the TT4000 Server to the Time Tailor product line now provides customers with a non-linear file interface to the patented Time Tailor 3500^{AP}. The TT4000 server software framework is based on a service-oriented architecture utilizing an http restful web service. The communication structure is tightly coupled with the playout and record modules to ensure video streaming is frame accurate to the Time Tailor. To deliver a fully functional ProRes codec, Prime Image integrated the Telestream Episode Engine[©] transcoder. These functional capabilities are seamlessly captured in the automation framework, which will allow customers to batch multiple file transactions, accompanied by Time Tailor settings and control that will run automatically thru the scheduled events without human intervention. This will improve overall performance, and efficiency when processing library content thru the Time Tailor 3500^{AP}.



TT 4000 Standard Features

- New operator interface
- Command & configure TT jobs
- Monitor transactions & processing
- Schedule / automate processing of encoded files
- UI accessible from internal network or web
- Resource management & optimization
- Controls embedded devices – play, record, TT3500^{AP}
- Manages error reporting and restarts
- Notifies operator of job status

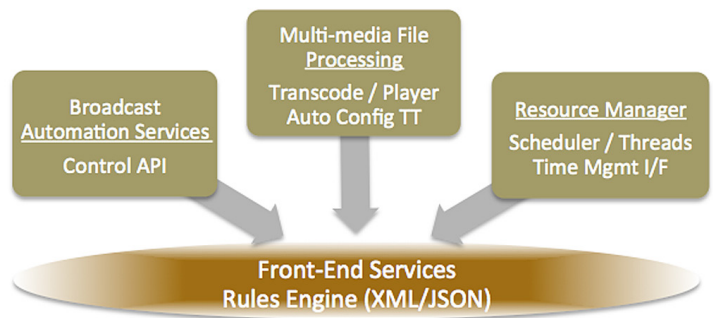


TT 4000 Support for IPTV

One other benefit of this new service architecture is the rapid adoption of new control widgets that will allow the Time Tailor to support upstream and downstream content management and delivery of video to IP and Content Delivery Networks (CDNs). As the broadcast industry continues transitioning from traditional distribution and transmission such as cable & satellite, to the rapidly emerging IP and CDNs, Prime Image is uniquely positioned to seamlessly integrate into network mediation services to support the rapid growth for time optimization solutions.

Customer Benefits

- Control time management tasks in the cloud
- Integrate seamlessly into automation and enterprise service bus architectures
- Supports HTTPS and secure socket connections to protect source video products
- Dynamically throttle bandwidth for IPTV distribution (reduce run-time of program)
- Directly connect to file distribution and compression transcoders in customer workflow



SPECIFICATIONS

Time Reduction

HD:	0 to 2 minutes in 1 frame steps
SD:	0 to 5 minutes in 1 frame steps

Video / Audio Processing

Production Master	1080psf, 23.98/24 fps, 1920x1080 resolution
Broadcast	1080i, 30 / 59.9i fps, 1920x1080 resolution (ATSC) 1080i, 25 fps, 1920/1080 or 1440x1080 resolution (PAL) 720p, 60 fps, 1280x720 resolution (ATSC)
Codecs Supported	DNXHD, 175/220 mbs MPEG2 (Transport or Program Stream), 50-3mbs MPEG4 (H.264), 1.5mbs ProRes 422, 147/220 mbs
Resolution	10 bit / 8 bit

Audio Processing

Channels:	16, + Dolby-E (8 encoded channels)
Signal	Embedded, AES/EBU SD (SMPTE 272C) HD (SMPTE 299M)
Resolution	24 bit

Dolby Processing

Format:	Dolby-E
---------	---------

Control

IP	RJ45 / CAT6
Signal	RS-422

Environmental

Power Supply	100 - 240 VAC, 50/60Hz, Auto
Power Dissipation	300 Watts Max
Height	2 U, 8.75 inches (22.2 cm)
Length	19 inches (48.3 cm)
Depth	22 inches (55.9 cm)
Weight	22 lbs (17.5 kg)



All specifications subject to change without notice.
